



# GMT MONTHLY MEMBERSHIP PROGRESS REPORT

Results as of: 5/31/2020

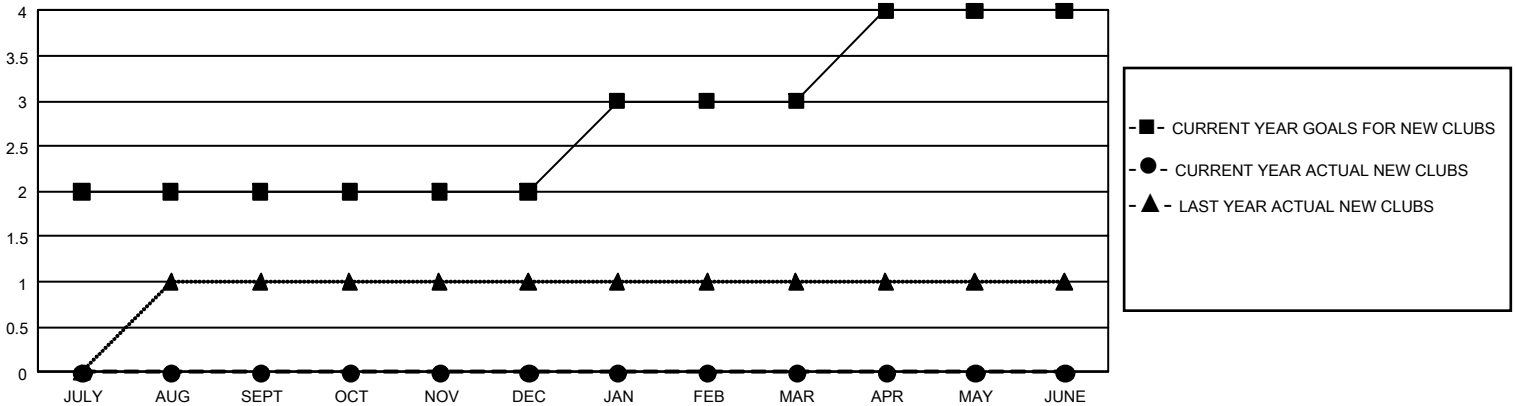
## GMT Constitutional Area 7, Group B

GMT: OPEN

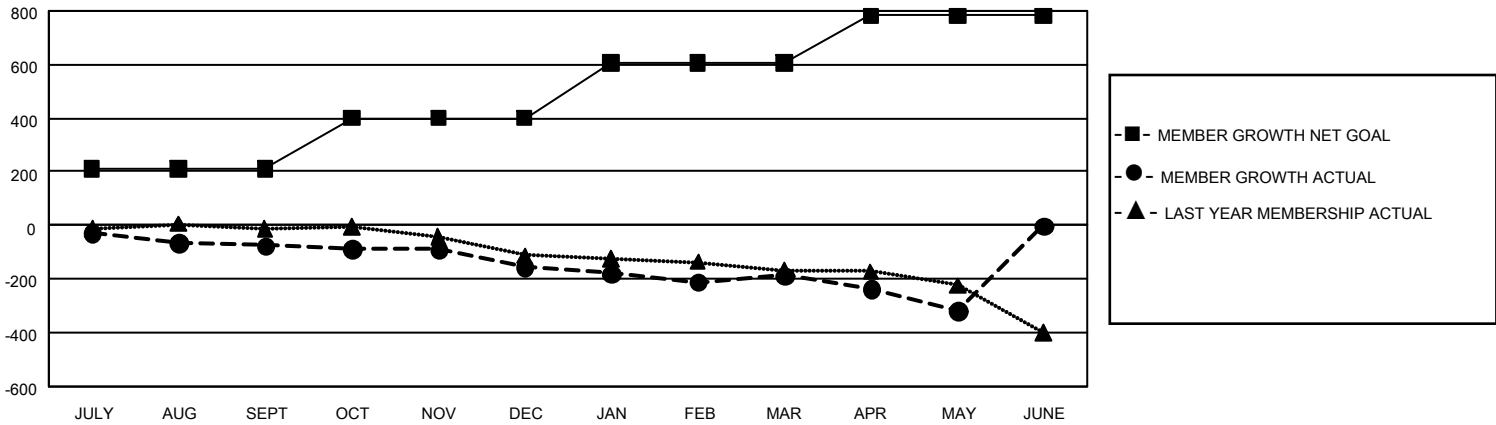
REPORT DOES NOT INCLUDE CLUBS IN UNDISTRICTED AREAS.

Clubs				Members			
RESULTS FOR 2019-2020				RESULTS FOR 2019-2020			
QUARTER	NEW CLUB GOAL	NEW CLUBS	DROPPED CLUBS	QUARTER	MEMBER GROWTH NET GOAL	MEMBER GROWTH ACTUAL	DROPPED MEMBERS ACTUAL (including transfers)
JULY/AUG/SEPT	6	0	1	JULY/AUG/SEPT	633	182	227
OCT/NOV/DEC	0	0	0	OCT/NOV/DEC	570	158	219
JAN/FEB/MAR	3	0	3	JAN/FEB/MAR	618	157	175
APR/MAY/JUNE	3	0	0	APR/MAY/JUNE	525	25	151

GOALS AND ACTUAL NEW CLUBS CUMULATIVE



GOALS AND ACTUAL MEMBERS CUMULATIVE



<b>DROPPED CLUBS: 4</b>	182 CLUBS OF 342 ADDED 1 OR MORE NEW MEMBERS	<b>GENDER DISTRIBUTION</b> MALE 6,176 (69.48%) FEMALE 2,713 (30.52%)
	<b>DROPPED MEMBERS</b> DECEASED 143 CLUB CANCELLED 0 OTHER 627 <b>TOTAL 770</b>	<a href="#">CLICK HERE FOR CUMULATIVE MEMBERSHIP DATA</a>